



Diesel Product Line

208-600 Volt

BSTD1000KWSP

60 Hz / 1800 RPM

1000 kWe / 900 kWe

Standby / Prime

Ratings

	208V	240V	480V	600V
Phase	3	3	3	3
PF	0.8	0.8	0.8	0.8
Hz	60	60	60	60
Generator Model	741RSL4045	741RSL4045	575RSL4044	741RSS4282
Connection	12 LEAD WYE	12 LEAD DELTA	4 LEAD WYE	4 LEAD WYE
Standby				
kWe	1000	1000	1000	1000
AMPS	3474	3011	1505	1204
Temp Rise	130°C / 27°C	130°C / 27°C	130°C / 27°C	130°C / 27°C
Prime [Only Available For Mobile Applications]				
kWe	900	900	900	900
AMPS	3126	2710	1355	1084
Temp Rise	105°C / 40°C	105°C / 40°C	105°C / 40°C	105°C / 40°C

Standard Equipment

Engine

- ▶ Radiator Cooled Unit Mounted (50°C)
- ▶ Blower Fan & Fan Drive
- ▶ Starter & Alternator
- ▶ Oil Pump & Filter
- ▶ Oil Drain Extension w/Valve
- ▶ Governor - Electronic Isochronous
- ▶ 24V Battery System & Cables
- ▶ SAE Flywheel & Housing
- ▶ Air Cleaner (Dry Single Stage)
- ▶ Flexible Fuel Connectors
- ▶ EPA Certified - Tier 2

Generator

- ▶ Brushless Single Bearing
- ▶ Automatic Voltage Regulator
- ▶ ± .25% Voltage Regulation
- ▶ 4 Pole, Rotating Field
- ▶ 130°C Standby Temperature Rise
- ▶ 105°C Standby Temperature Rise
- ▶ 100% of Rated Load - One Step
- ▶ 5% Maximum Harmonic Content
- ▶ NEMA MG 1, IEEE and ANSI standards compliance for temperature rise

Additional

- ▶ Microprocessor Based Digital Control
- ▶ Base - Structural Steel
- ▶ Main Line Circuit Breaker Mounted & Wired
- ▶ Critical Grade Silencer (Loose)
- ▶ Flexible Exhaust Connectors
- ▶ Battery Charger 24V 5 Amp
- ▶ Jacket Water Heater -20°F 9000W 240V w/Isolation Valves
- ▶ Vibration Isolation Mounts (Pad Type)
- ▶ Radiator Duct Flange (OPU Only)
- ▶ Single Source Supplier
- ▶ 2YR / 2000HR Standby Warranty
- ▶ 1YR / 1500HR Prime Warranty
- ▶ Standard Colors - White / Tan / Gray

Diesel Product Line

BSTD1000KWSP
1000kWe/900kWe



POWERDAK
POWER PRODUCTS, LLC

Application Data

Engine

Manufacturer:	MTU	Displacement - Cu. In. (lit):	1943 (31.8)
Model Standby (Prime):	16V2000G85	Bore - in. (cm) x Stroke - in. (cm):	5.12 (13.0) x 5.91 (15.0)
Type:	4-Cycle	Compression Ratio:	16.0:1
Aspiration:	Turbo Charged, Intercooled	Rated RPM:	1800
Cylinder Arrangement:	16 Cylinder Vee	Max HP Stby (kWm):	1495 (1115)

Exhaust System

	Standby	Prime
Gas Temp. (Stack): °F (°C)	1,022 (550)	986 (530)
Gas Volume at Stack Temp: CFM (m ³ /min)	7,845 (222)	7,420 (210)
Maximum Allowable Exhaust Restriction: in. H ₂ O (kPa)	34.1 (8.53)	34.1 (8.53)

Cooling System

Ambient Capacity of Radiator: °F (°C)	122 (50.0)	122 (50.0)
Maximum Allowable Static Pressure on Rad. Exhaust: in. H ₂ O (kPa)	0.5 (0.12)	0.5 (0.12)
Jacket Water Pump Flow Rate: Gpm (lit/min)	220 (833)	220 (833)
Heat Rejection to Jacket Coolant: BTUM (kW)	22,857 (400)	20,286 (355)
Intercooler Pump Flow Rate: Gpm (lit/min)	68.2 (258)	68.2 (258)
Heat Rejection to Intercooler: BTUM (kW)	18,286 (320)	16,571 (290)
Heat Radiated to Ambient: BTUM (kW)	6,216 (110)	5,635 (98.6)

Air Requirements

Aspirating: CFM (m ³ /min)	3,074 (87.0)	2,968 (84.0)
Air Flow Required for Rad. Cooled Unit: CFM (m ³ /min)	60,883 (1,723)	60,883 (1,723)
Air Flow Required for Heat Exchanger/Rem. Rad. CFM (m ³ /min)	Consult Factory For Remote Cooled Applications	

Fuel Consumption

At 100% of Power Rating: gal/hr (lit/hr)	71.0 (269)	64.9 (246)
At 75% of Power Rating: gal/hr (lit/hr)	53.7 (203)	49.2 (186)
At 50% of Power Rating: gal/hr (lit/hr)	36.7 (139)	33.4 (126.4)

Fluids Capacity

Total Oil System: gal (lit)	26.9 (102)	26.9 (102)
Engine Jacket Water Capacity: gal (lit)	34.3 (130)	34.3 (130)
System Coolant Capacity: gal (lit)	56.0 (212)	56.0 (212)

Deration Factors

Rated power available at ambient temperatures to 40°C. At Altitudes to 5906 ft (1800 m).
Consult factory for site conditions above these parameters.

BSTD1000KWSP
1000kWe/900kWe

Diesel Product Line

BSTD1000KWSP
1000kWe/900kWe

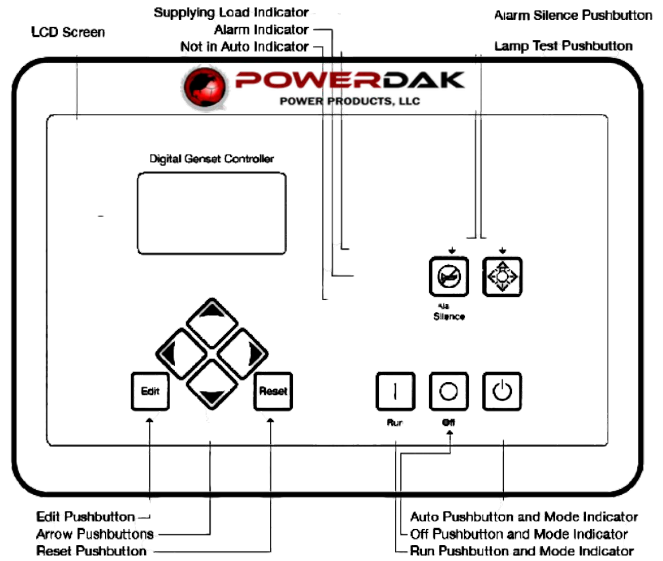


POWERDAK
POWER PRODUCTS, LLC

DGC-2020 Control Panel

Standard Features

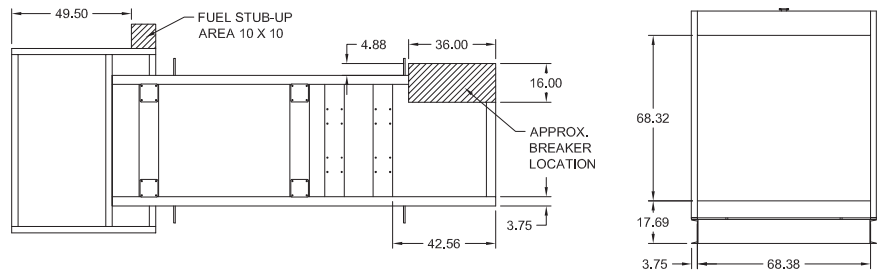
- ▶ Digital Metering
- ▶ Engine Parameters
- ▶ Generator Protection Functions
- ▶ Engine Protection
- ▶ CAN Bus ECU Communications
- ▶ Windows-Based Software
- ▶ Multilingual Capability
- ▶ Remote Communications to RDP-110 Remote Annunciator
- ▶ 16 Programmable Contact Inputs
- ▶ Up to 15 Contact Outputs (7 standard)
- ▶ UL Recognized, CSA Certified, CE Approved
- ▶ Event Recording
- ▶ IP 54 Front Panel Rating with Integrated Gasket
- ▶ NFPA 110 Level 1 Compatible



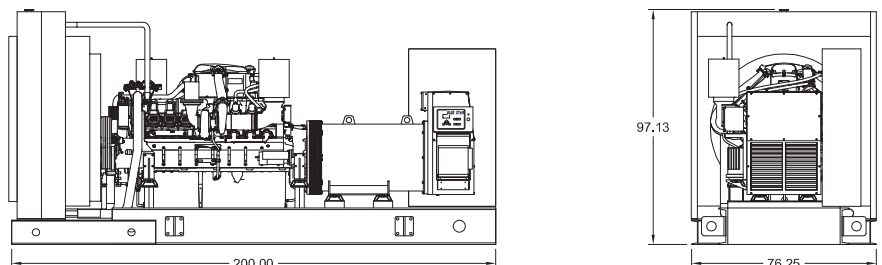
Weights / Dimensions / Sound Data

	L x W x H	Weight lbs
OPU	200 x 76 x 97 in	17300
Level 1	212 x 106 x 129 in	19500
Level 2	N/A	N/A
Level 3	392x 106 x 129 in	22400

Height measured from bottom of base to exhaust stack.



	No Load	Full Load
OPU	89 dBA	92 dBA
Level 1	87 dBA	90 dBA
Level 2	N/A	N/A
Level 3	77 dBA	81 dBA



Drawings based on standard open power 480 volt standby generator. Lengths may vary with other voltages. Subject to change without notice. Sound data as measured at 23 feet (7 meters) in accordance with ISO 8528-10 at standby rating.

BSTD1000KWSP
1000kWe/900kWe

Diesel Product Line

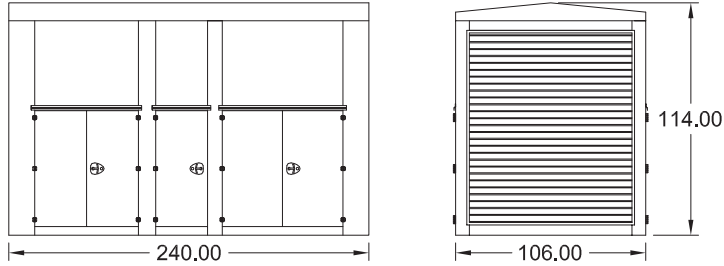
BSTD1000KWSP
1000kWe/900kWe



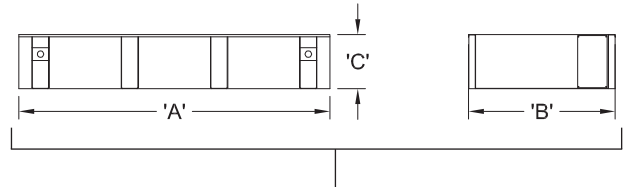
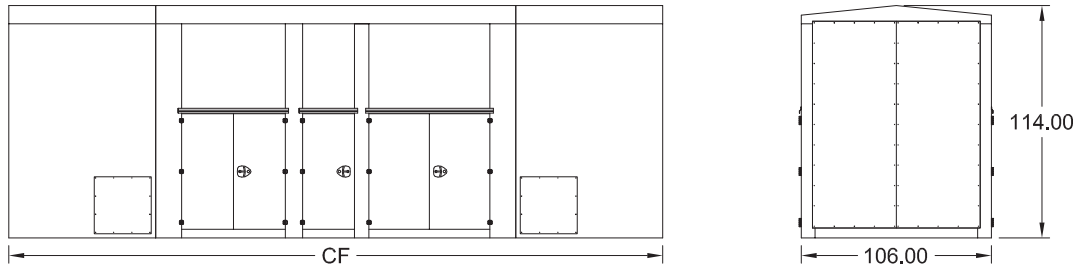
POWERDAK
 POWER PRODUCTS, LLC

Optional Enclosures and Fuel Tanks

Level 1 Enclosure (WPE)



Level 3 Enclosure (SAE)



*Level 1 enclosures are 100 MPH Wind Rated as standard (up to 150 MPH available).

**Level 2 & 3 enclosures are 150 MPH Wind Rated as standard.

***Enclosure height does not include unit base or exhaust stack.

Double Wall UL 142 Listed Fuel Tanks

	12 Hour (875 Gallon)			24 Hour (1750 Gallon)			48 Hour (3500 Gallon)		
	A	B	C	A	B	C	A	B	C
OPU	212.00	106.00	14.00	212.00	106.00	28.00	288.00	106.00	26.00
Level 1	212.00	106.00	14.00	212.00	106.00	28.00	288.00	106.00	26.00
Level 2	N/A	N/A	N/A	N/A	N/A	N/A	N/A	N/A	N/A
Level 3	392.00	106.00	8.00	392.00	106.00	14.00	392.00	106.00	26.00

*All specification sheet dimensions are represented in inches.

All enclosures and fuel tanks are based on the standard standby unit configuration. Any deviation can change dimensions. *Level 1 enclosure not UL listed.

Materials and specifications subject to change without notice.

Powerdak Power Products - 3350 Jet Drive, Rapid City, South Dakota 57703 - 605.341.6160 Ext 1 - Fax 605.718.9998
e-mail: dave@dakgenerator.com

American Owned



American Made

BSTD1000KWSP
1000kWe/900kWe